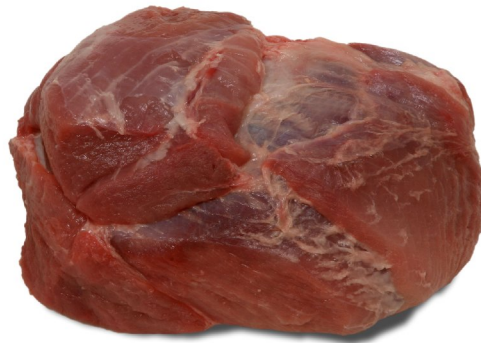


Product Overview

Description of Cut	General Trim	Comments	Approximate Weight
Cushion meat (knuckle)	- Denude	-	-



(ref.:46299)

Specific Items

Product Code	Box Dimensions (mm)	Packaging	Units/ Bag	Units/ Box	Box/ Pallet	Program	Fresh or Frozen	Shelf Life	Cut and Outside Trim	Comments
46299	11684 x 9654 x 11176	Combo, bulk	-	-	1	Regular	Fresh	8 Days	-	-
46379	584 x 356 x 144	Box, bulk	35	35	40	Regular	Frozen	2 Years	-	-
46390 N.A. in Canada	552 x 425 x 129	Box, cov	4	12	50	Natural	Fresh	27 Days	-	-
46393	584 x 356 x 144	Box, bulk	35	35	40	Antibiotic free Vegetarian-fed	Fresh	8 Days	-	-
46399	584 x 356 x 144	Box, bulk	35	35	40	Regular	Fresh	8 Days	-	-