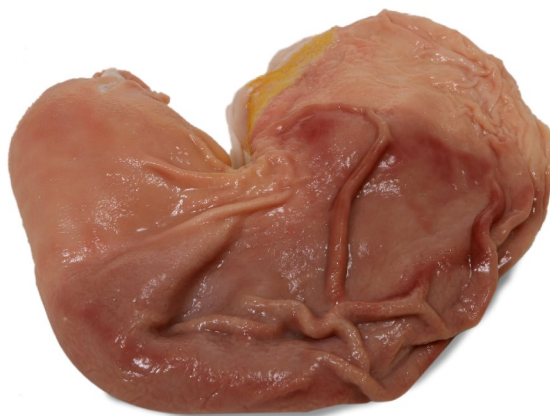


Product Overview

Description of Cut	General Trim	Comments	Approximate Weight
- Stomach	-	-	-



(ref.:86079)

Specific Items

Product Code	Box Dimensions (mm)	Packaging	Units/ Bag	Units/ Box	Box/ Pallet	Program	Fresh or Frozen	Shelf Life	Cut and Outside Trim	Comments
86079	440 x 280 x 164	Box, bulk	34	34	50	Regular	Frozen	2 Years	-	Even Weight 17kg
86179	540 x 250 x 112	Box, bulk	20	20	50-60	Regular	Frozen	2 Years	-	Even Weight 10kg