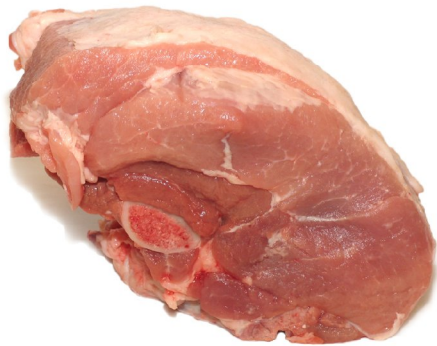


Description générale du produit

Description of Cut	General Trim	Comments	Approximate Weight
Loin buckeye bones in	-	-	-



(ref.:25079)



(ref.:25079)



(ref.:25079)

Specific Items

Product Code	Box Dimensions (mm)	Packaging	Units / Bag	Units / Box	Boxes / Pallet	Program	Fresh or Frozen	Shelf Life	Cut and Outside Trim	Comments
24979	552 x 425 x 129	Box, bulk	-	-	50	Régular	Frozen	2 Years	-	-
25079	584 x 356 x 144	Box, bulk	-	-	40	Régular	Frozen	2 Years	-	-
25099	584 x 356 x 144	Box, bulk	-	-	40	Régular	Fresh	8 Days	-	-