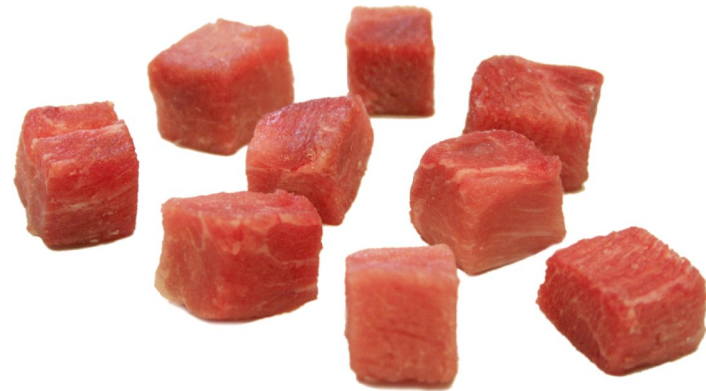


*Product Overview*

Description of Cut	General Trim	Comments	Approximate Weight
Diced ham: 19 mm x 19 mm x 25 mm No seasoning	-	-	Fixed Weight



(Ref.: 19479)



(Ref.: 19479)

*Specific Items*

Product Code	Box Dimensions (mm)	Packaging	Units/ Bag	Units/ Box	Box/ Pallet	Program	Fresh or Frozen	Shelf Life	Cut and Outside Trim	Comments
19479	584 x 356 x 144	Box, bags	10 kg/bag	20 KG	40	Regular	Frozen	2 Years	-	-